

# Building Stakeholder Engagement For Informed River Restoration and Catchment Management

Ruairí Ó Conchúir, MulkearLIFE / Inland Fisheries Ireland

ERRC Conference, Vienna, Austria  
29<sup>th</sup> October 2014



# Overview



- 1. Background to MulkearLIFE**
- 2. Community Engagement in Catchment Scale Partnership Building**
- 3. MulkearLIFE's River Restoration Work**
- 4. Involving Local Communities**
- 5. Concluding Comments**

# **Who Is Involved with MulkearLIFE**

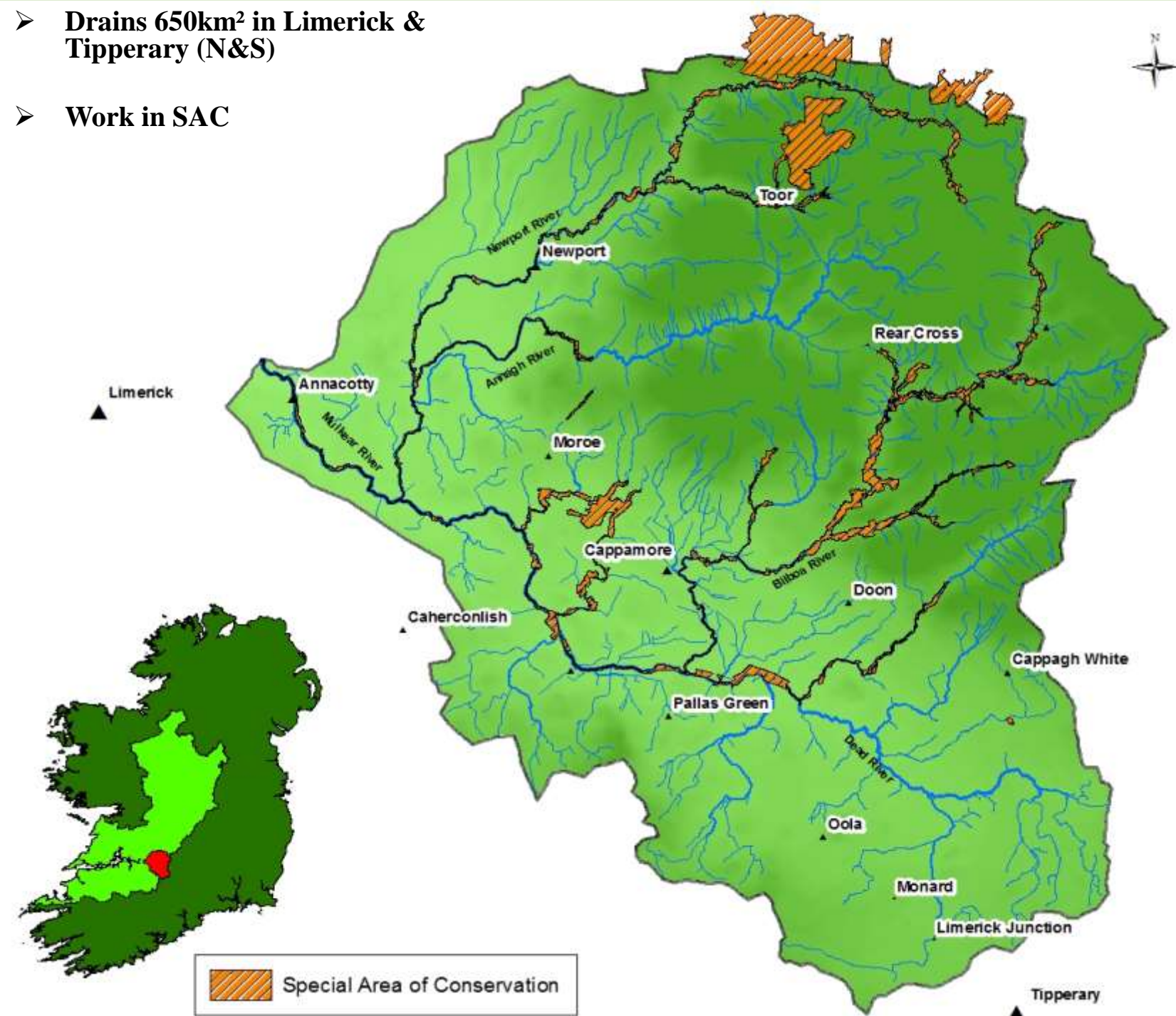
## **5 Year - €1.75 million?**

- 1. LIFE + Nature – 50% funding**
- 2. Coordinating Beneficiary – Inland Fisheries Ireland**
- 3. Associated Beneficiaries – OPW & Limerick Co Co**
- 4. Co Financiers & Project Supports:** NPWS, Local authorities, Coillte, ESB, DAFM, IFA, ICMSA, Teagasc, angling groups,



➤ **Drains 650km<sup>2</sup> in Limerick & Tipperary (N&S)**

➤ **Work in SAC**





# **Community Engagement & Partnership Building: Mulkear Catchment Management Group**



**LIFE Team, IFI, NPWS, OPW, Limerick Co. Co., Teagasc,  
Tralee IT, local farmers, anglers & tourism rep.  
(Missing: ESB, Tipp Co. Co., Dept of Agric.)**



# Main Threats MulkearLIFE is Addressing



- **Long History of Land Drainage**
  - 1874 Mulkear Drainage District
  - 1942 OPW Scheme
  - 1997 OPW scheme
- **Invasive Species**
- **Barriers to Migration**
- **Water Quality Concerns**

# Drainage History dating to 1874





# Drainage History



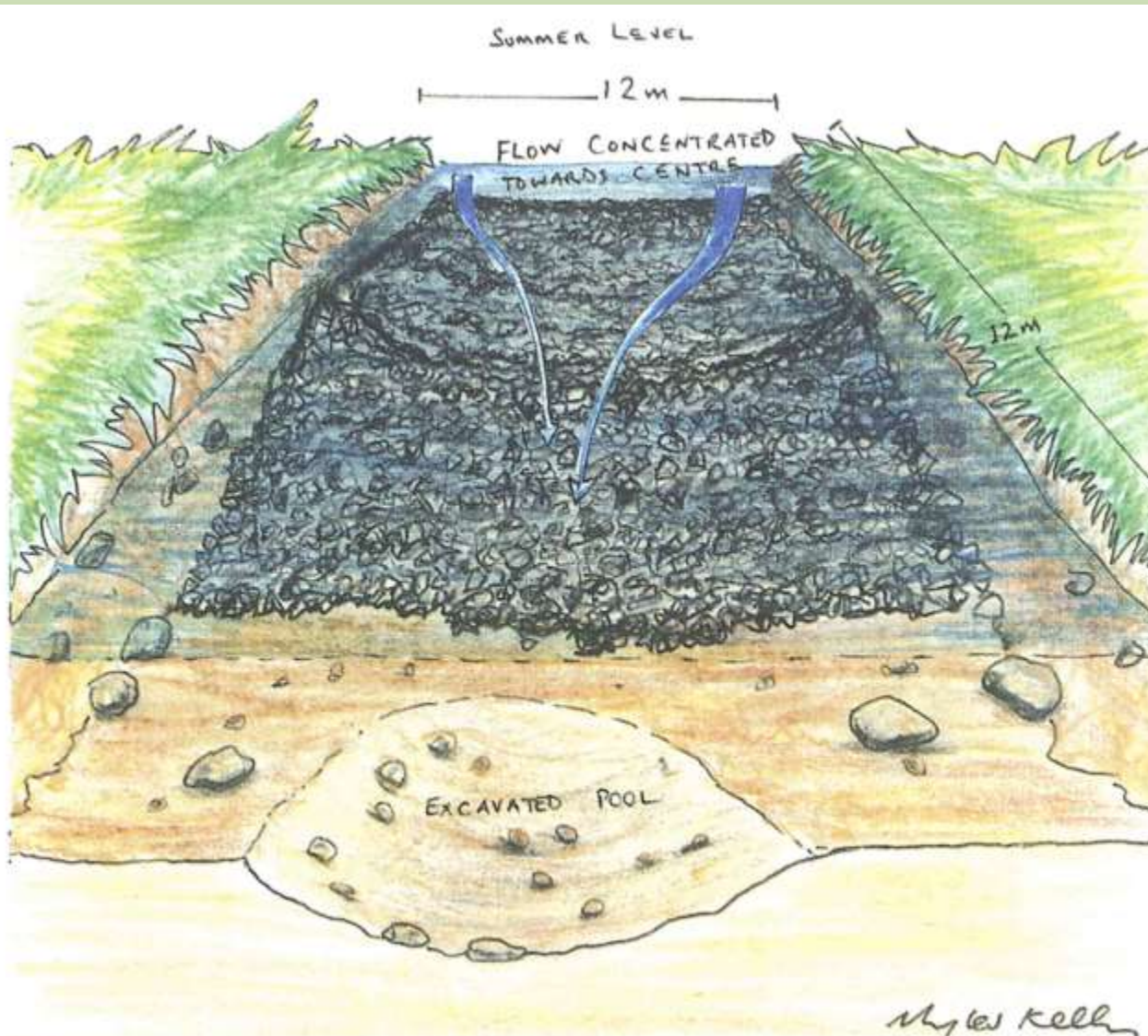


# River restoration for Salmon - Mulkear River



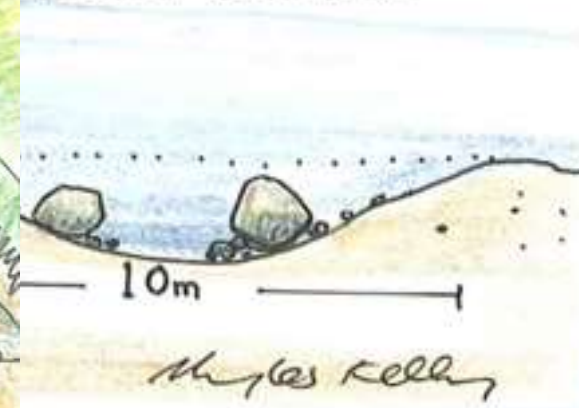
- Benefit: Salmon, Sea Lamprey and Otters

# Rubble Mats



Plan view of a rubble mat.

EXCAVATE POOL .... ↓  
RANDOM† BOULDERS















**Rubble Mat Construction is primarily designed to improve habitat for salmonids**





- Average salmon parr density has tripled



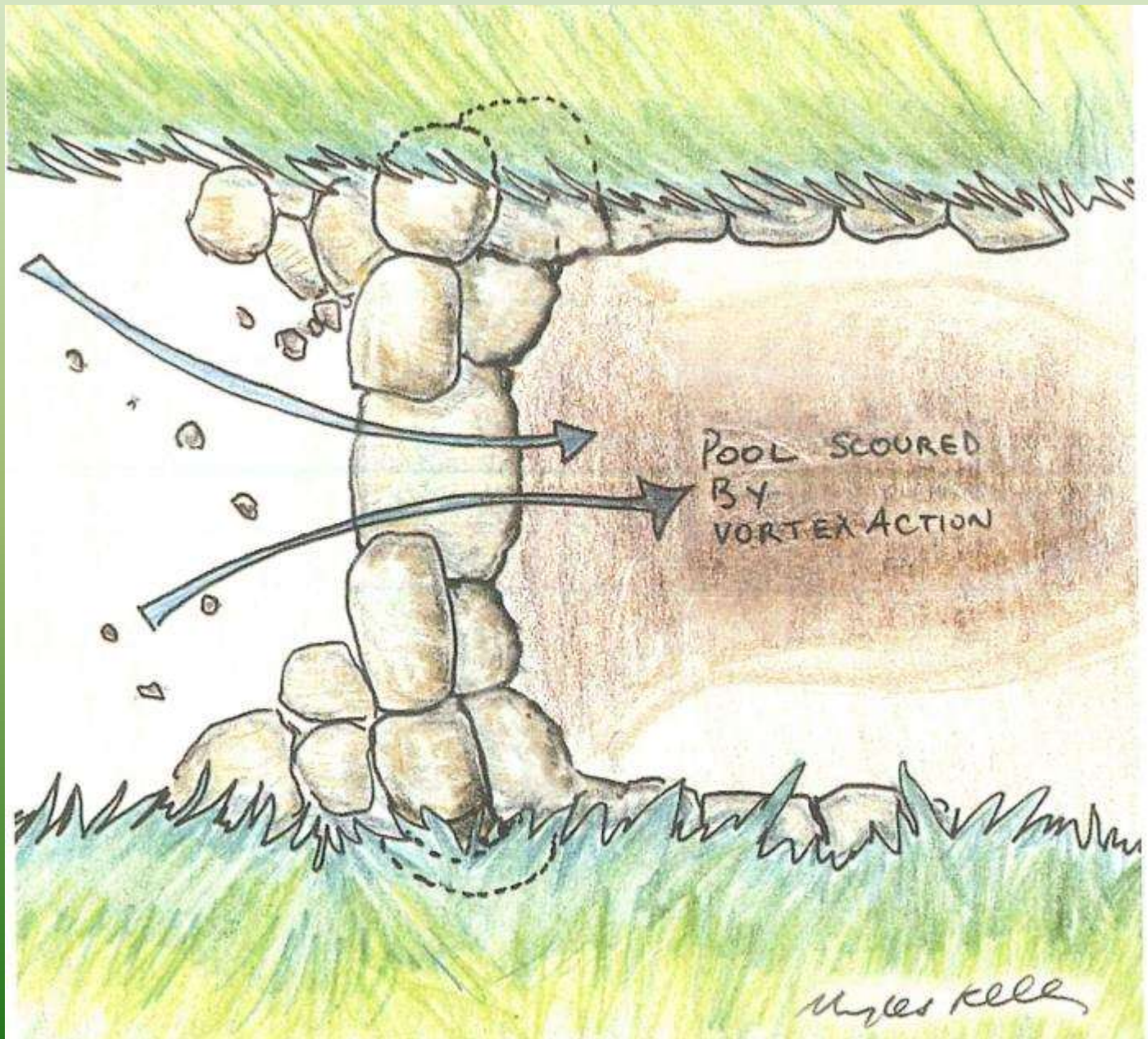
# River restoration for Salmon – Newport & Bilboa rivers



- Benefit: Salmon, Sea Lamprey and Otters



# Stone Vortex Weir





# Stone Vortex Weir





# Stone Vortex Weir







# Random Boulders





**MulkearLIFE's Sea Lamprey Work**



# Work Focus - Sea Lamprey Passage

- Easement of Sea Lamprey passage over weirs





- Historic passage problems at Annacotty
- Ballyclogh weir – major problem





# Passage Problems



Ballyclogh Weir



Annacotty Weir





# Lamprey Substrate





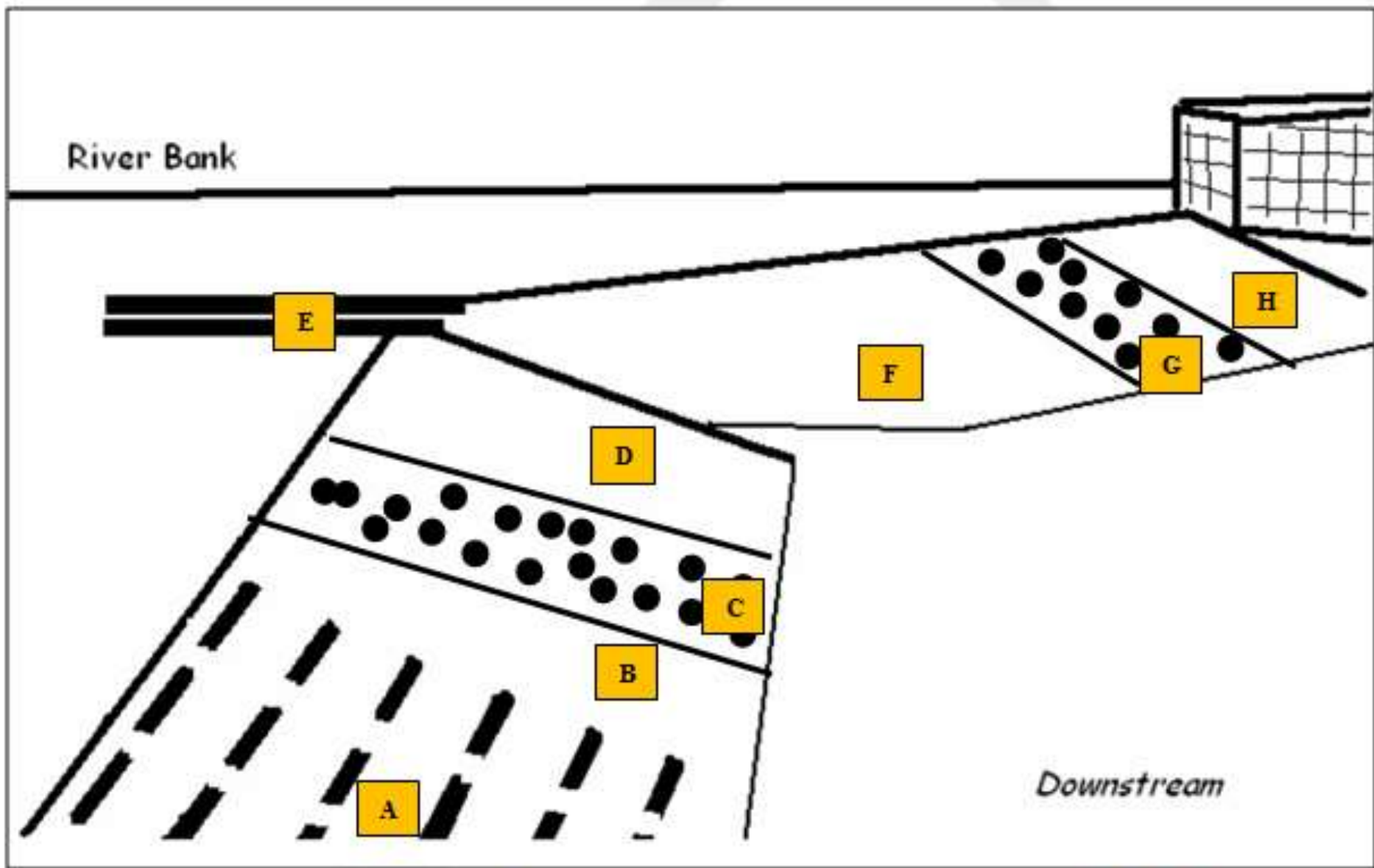
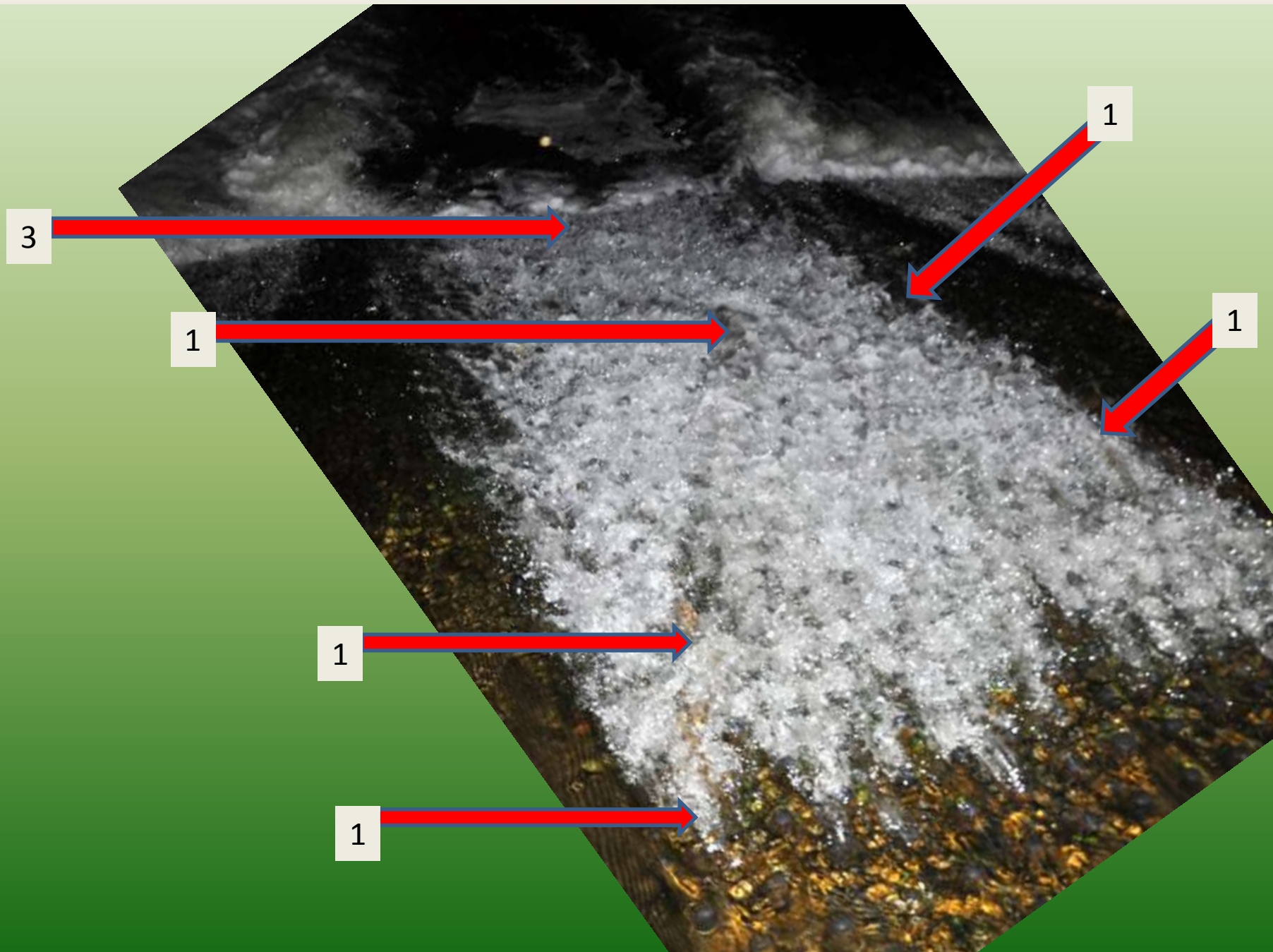


Diagram 2. Annacotty weir outlining the 8 observation zones. (A. Chicane baffles; B. No pass; C. Lamprey pass; D. No pass; E. Denil fish pass; F. No pass; G. Lamprey pass; H. No pass)

**Where Are The Sea Lamprey?**

**June 2013 @ 01:00hrs**





# Passage June 2014 with 34 sea lamprey on pass





# Lamprey Passage





# Sea Lamprey at Ballyclogh weir





# Ballyclogh Weir





# Overview of Work & Objectives

An aerial photograph of a river flowing through a dense green forest. A weir or small dam structure is visible across the river, with water cascading over it. The riverbanks are lined with thick vegetation. Several red arrows point from text boxes to specific areas of the river and weir, indicating work objectives.

**Ensure Fish Passage**


**Undertake Bank  
Protection Work**

**Remove Dysfunctional  
Fish Passes**

**Address Scouring  
Illegal Fishing Activity**



# Partial Removal & Installation of Elongated Mat

An aerial photograph of a river flowing through a dense forest. A rock weir is visible in the center of the river, creating a small waterfall. Two orange callout boxes are overlaid on the image. The first box, located in the upper left, points to a section of the river upstream of the weir with a red double-headed arrow. The second box, located in the lower center, points to the weir itself. A blue rectangular box with white text is positioned between the two orange boxes, also with a red double-headed arrow.

Removal of this section

Continuous elongated rock  
mat installed above and  
below removed section















# Ballyclogh Weir





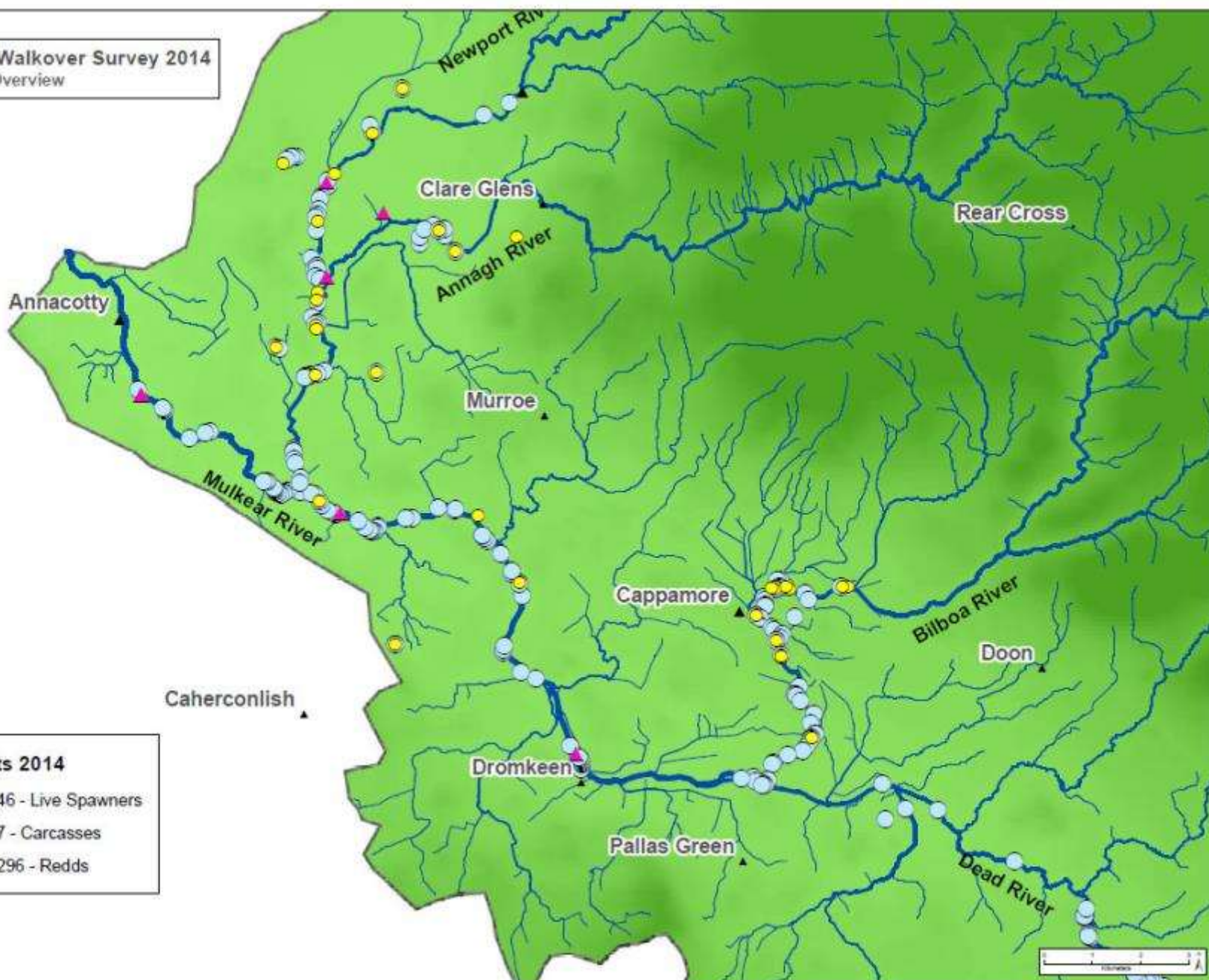


Result: Fish Passage Opened – 184km of lamprey habitat & directly upstream 1km of prime riffle and pool habitat created



# Sea Lamprey Survey Work Above Ballyclogh Weir – 2014

Sea Lamprey Walkover Survey 2014  
Overview







**Kingfisher: Now found here & higher up in the catchment than ever before**



# River Restoration Work & Our Work for Otters





# **Survey Work - 5 Annual Catchment wide surveys & 1 Natal Holt Survey & five training workshops**



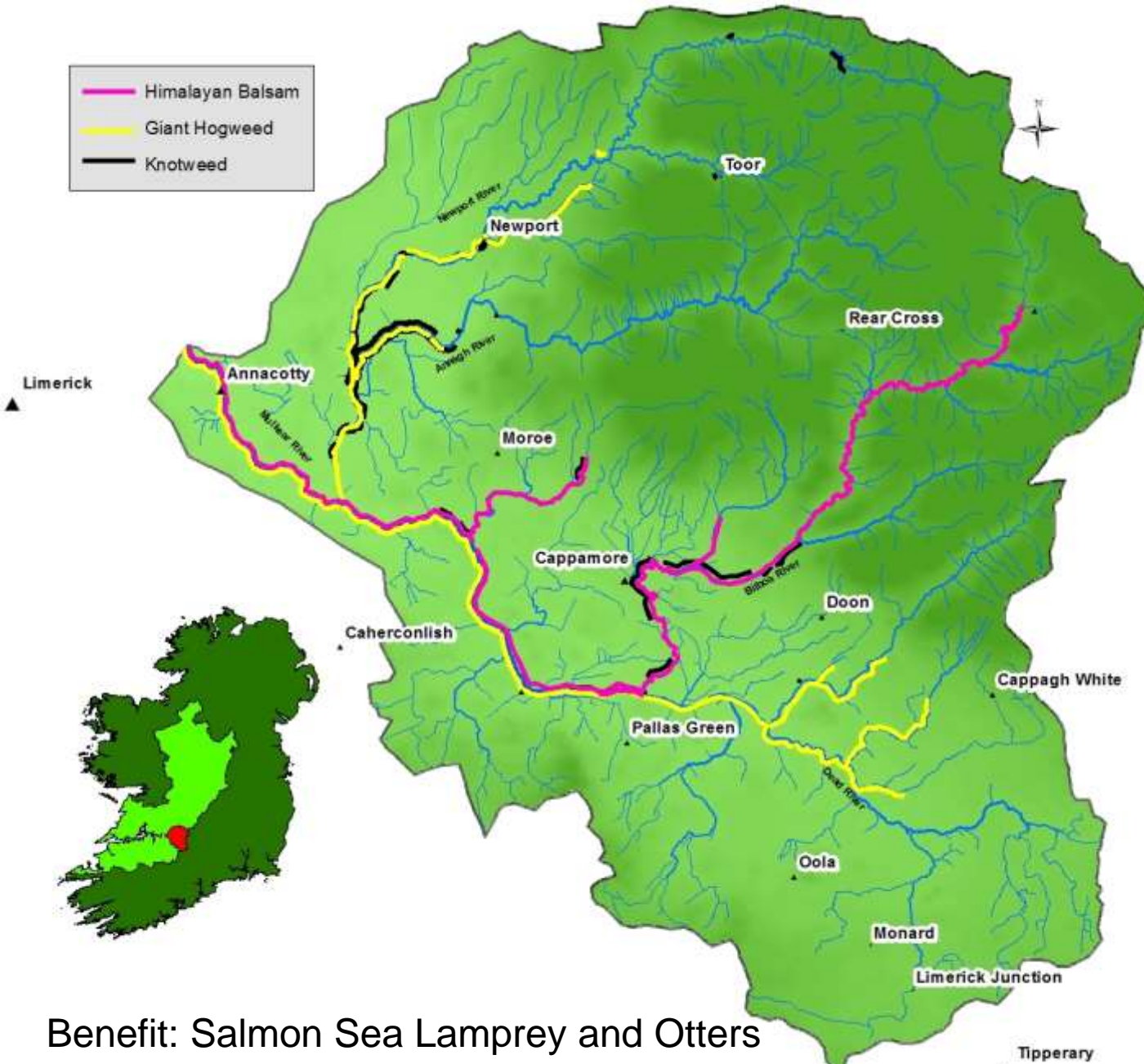


# Habitat enhancement work and installation of 10 artificial otter holts





# Conservation Action: Control and removal of Giant Hogweed, Japanese Knotweed and Himalayan Balsam



Benefit: Salmon Sea Lamprey and Otters



# Giant Hogweed Control







## Knotweed control





# Control & subsequent removal of Himalayan Balsam

- Manual pulling to control Himalayan Balsam
- Use of the Mulkear Conservation Volunteers (MCV)





# **Farmers Are Our Key Partners On The Ground**





# Conservation Work With Farmers

- Improvement of water quality in areas affected by cattle disturbance (trampling and faecal disturbance)



- Benefit: Farmers, Salmon, Sea Lamprey & Otters



# Work With Farmers In the Mulkear Catchment



- Work with Farmers to promote good water stewardship & riparian management
- Farms subsequently to act as demo farms





**Thank You  
For Your Attention**

**Ruairí Ó Conchúir**

**[www.mulkearlife.com](http://www.mulkearlife.com)**

**Please Join Us On**

