

Prut River Corridor

Approach, achievements and results in the context of implementation the SEE River Project



Cristian RUSU; Ramona CURELEA; Elena TUCHIU;
Ioana NEDELEA; Aliona HAI SAN, Ludmila TONCIA
National Administration Romanian Waters

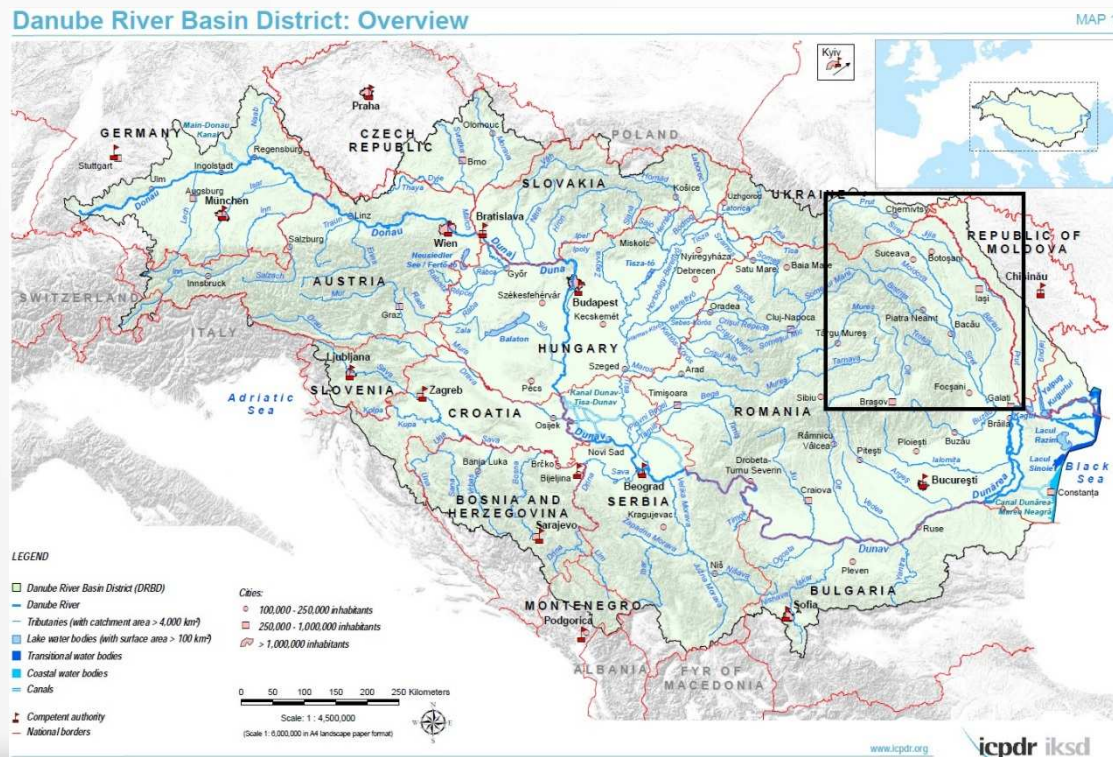
ERRC 2004 - Connecting River Restoration Thinking to Innovative River Management
27-29 October 2014, Vienna

Content

- **Prut River . General data;**
- **Prut River Corridor. Actions and pressures;**
- **Starting point;**
- **Approach, Actions , Achievements;**
- **Objectives and visions related to Prut Rover corridor**
- **Future steps**

❑ Prut River. General data

The second largest tributary of Danube with a total length of 952.9 km, the Prut River springs from Ukraine, constitutes the border between Romania, Ukraine and Republic of Moldova and flows into the Danube River



□ Prut River. General data

Prut River is the last main tributary of the Danube, being a “gate” to the **Danube Delta Biosphere Reserve**, with lakes, meanders, networks of ponds and natural channels shaped by the river on its lower sector.

The main characteristic which defines Prut is the biodiversity and on this regard it has been designated the Natural Park “The Lower Prut Flood plain” (on a surface of 8247 ha). The ecological importance of this natural park is recognized at international level, almost the entirely territory of the park being declared as Site of Community Importance area as integrated part of Natura 2000 sites. Four natural protected areas define the Prut River on Romanian territory.



Prut River Corridor . Action and pressurse



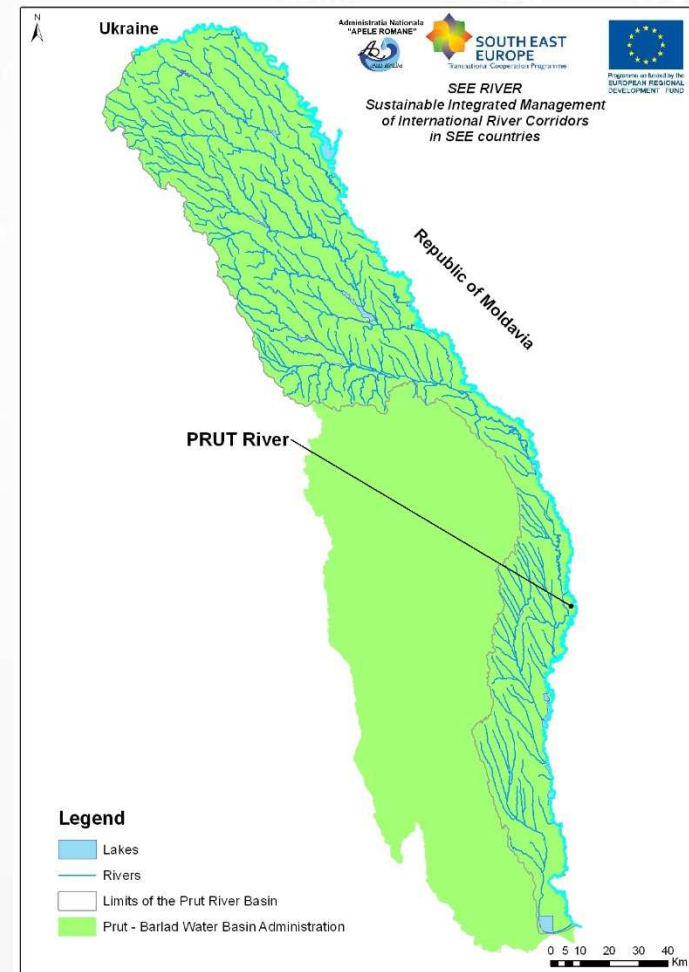
Common understanding the concept

River corridor is an area located on both sides of the river , where riverine processes took or have taken place

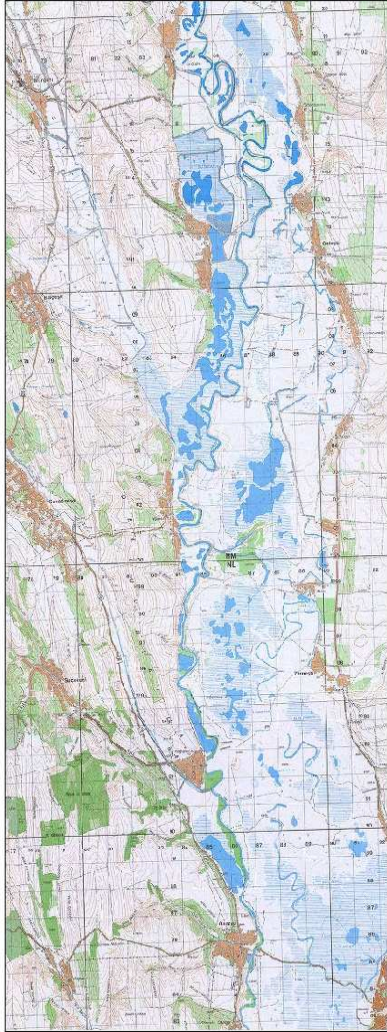
The River Corridor is defined by the external boundaries of Hydrological Morphological pedological or/and ecological phenomena.

The width of the River corridor depends on the type and river flow and it changes based on human actions. Being a “Land of River” it has to be managed in a sustainable way.

In the frame of SEE River Project, the river corridor is defined as the main interest and human impact area across the Prut river



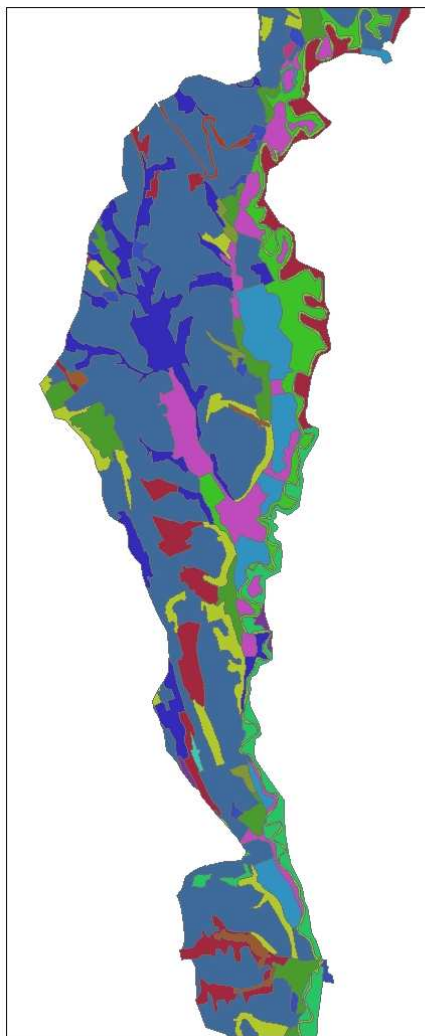
Prut River Corridor. Actions and pressures



During the last 50 years, the human activities contributes to the increasing of pollution and changes of Prut River natural course.

The waste water discharge from urban agglomerations, industry and farms, changes in land use, inadequate agricultural practices and spatial planning influenced the status of the Prut River corridor.

Prut River Corridor. Actions and pressures



The agriculture represents the most significant economic activity inside the Prut River corridor area.

Despite the regulations works , building of flood protection dikes, **THE SPECIES AND NATURAL HABITATS** are very well preserved

In this terms Prut River was designated as Natura 2000 site, natural park, and natural reserve.



Prut River Corridor. Actions and pressures



A common part of flooded area of Prut River is candidate to RAMSAR status site.

The Lower Prut is included in the Program “Green Corridor of Lower Danube” and the integrated management of wetlands will be extended in the Lower Prut Sector in the frame of the proposal for Biosphere Reserve between Romania, Moldova and Ukraine.



Starting point in the frame of SEE River Project

Prut River itself represents a special case, due to the fact that the river is the border between NON EU and EU member states, and several administrative and legal constraints influenced a strong common planning approach and finding synergetic solutions for issues emerging from diverse development pressures on international river corridors.

The political context in Ukraine during the planning common workshops was also one of the aspects which the Prut river related parties have to faced during the project



Approach. Actions. Achievements



CENTRUL PENTRU POLITICI ECONOMICE DURABILE DE MEDIU
Adresa: Lt. Av. Gh. Negel nr 45, Ap 1, Sector 6, Bucuresti
Tel/Fax: 0371339862/0378106933
Email: office@cesep.ro

RAPORT PRIVIND IDENTIFICAREA SI STRATEGIA DE COMUNICARE A STAKEHOLDERILOR



- The process of reaching the main **objective of the project related to empower the stakeholders along the international SEE rivers to gain knowledge on planning and implementing decision-making processes for integrating the heterogeneous interests and objectives of regulating the international river corridors**, was started from adapting the SEE River Communication strategy to the Prut River Pilot case.
- Based on the above target, an identification, informing, consultation and involvement strategy, specifically related to Prut River corridor was developed.

Approach. **Actions.** Achievements



Two (2) main target groups with different characteristics were identified:

- a first one - Small and poor communities along the Prut River corridor, which face the really problems and
- the second one: - trained , informed specialists from local , regional or national different institutes.



Three (3) national workshops and one (1) International were organized in the frame of SEE River Project, in Romania, Ukraine and Moldova. Around 100 representatives from Ministry of Environment, water management, forestry, biodiversity, energy, agriculture, local councils, NGO, communities joined these meetings.



Approach. Actions. Achievements



Annex 7

Chestionar privind aspectele cheie, problematici si obiective in legatura cu managementul coridorului raului PRUT

Scop

Chestionarul are ca scop identificarea aspectelor cheie, a problematicilor si a obiectivelor in cadrul managementului coridorului raului Prut, in vederea realizarii unei abordari integrate privind toate aspectele legate de managementul cantitativ si calitativ al apelor, al planificarii teritoriale precum si privind utilizarea terenului, in legatura cu coridorul raului Prut.

Cadrul General

Coridoarele raurilor fac subiectul diferitelor utilizari, sunt uneori exploatate unilateral fapt ce poate conduce la deteriorarea mediului si dezvoltarea economica nesustenabila. In cadrul proiectului SEE River, coridorul raului este definit ca o zona de-a lungul ambelor maluri care este uneori, obiectul unei diverse si contradictorii interventii antropice, care poate avea loc atat in trecut, cat si in prezent si viitor.

Timpul necesar completarii chestionarului este estimat ca fiind 30 minute.

Chestionarul consta in 4 sectiuni:

Sectiunea 1 solicita detalii de contact ale persoanei care a completat chestionarul.

Sectiunea 2 cuprinde intrebari legate de cadrul legislativ privind problematica coridoarelor raurilor.

Sectiunea 3 solicita informatii privind problemele legate de coridorul raului Prut.

Sectiunea 4 se refera la asteptarile privind continutul setului de instrumente necesar Tool Kit-ului.

Sectiunea 1: Detalii de contact ale persoanei intervievate

Interview			
Num:	Lazăr Chirică		
Organizatie:	Ministerul Mediului	Republica Moldova	
Pozitie:	Viceministru		
E-mail:	chirica@mediu.gov.md	Tel: 022204504	

- The process of interviewing and involvement the stakeholders was based on different thematic questionnaires regarding the key aspects, gaps and objectives in relation with Prut River corridor management. Free discussions were also took place.

The questionnaire was structured on 4 main chapters as follows:

- the main inter sectorial gaps;
- the significant challenges;
- the significant objectives on integrate level and
- the significant obstacles in reaching the objectives concerning the Prut River corridor management



- ☐ Absutnitatea normativno-pravovoi bazi, zagalnoi dla priberezhnikh kraipno integrovannomu upravlinniu
- ☐ neodkovidno prava baza / perekladach
- ☐ Rinnii rezhim okhoroni na tii zhe teritorii z obox storin (Rumunskiiy bereg, pozit Yasii okrug Natura 2000 i naturalnyi zapovidnik na teritorii Ukrainy, na tii zhe teritorii, kiazii ne mas okhoronnoyi statusu zogo tipu)
- ☐ Absutnitatea effektivnih sposobi ob'edinitvannya...dla okhoroni upravlinnia zapovidnikh prirodnykh teritoriyami
- ☐ Inshe, utochnit':

2.3 Există exemple concrete de bune practici in legatura cu abordarea, cooperarea intersectoriala vis-a-vis de coridorul raului Prut (spre exemplu agricultura, aparaie impotriva inundatiilor, planificare teritoriala etc.)?

Ya rugam selectati una sau mai multe optiuni:

- ☐ Proiectul Phas CBC Management bilateral Romania - Ucraina pentru conservarea biodiversitatii in regiunea de granita dintre cele 2 tari. Prin proiect s-au consolidat parteneriatul mai ales privind din perspectiva relatiei dintre Romania si Ucraina (prin schimb de bune practici, realizarea unui ghid de actiuni comune). <http://biodiversitatecbc-armis.ro/new/?page=despre>

- ☐ Altele, va rog specificati:

2.3 Приклади практики у ставленні до ліхолу, міжсекторального співробітництва vis-a-vis в річковому коридорі Прут (наприклад, сільське господарство, захист від повеней, територіальне планування та інше)?

Будь ласка, виберіть один або декілька параметрів:

- ☐ Проект Фаза CBC Двостороннє управління Румунія - Україна щодо збереження біодиверситету в прикордонному районі між двома країнами. Проєктом зміцнювалися партнерські зв'язки, особливо відносини між Румунією та УА Україна (через обмін передовим досвідом та підготовка методичних...спільних заходів). <http://biodiversitatecbc-armis.ro/new/?page=despre>

- ☐ Inshe, utochnit':

Sectiunea 3. Aspecte cheie privind coridorul raului Prut

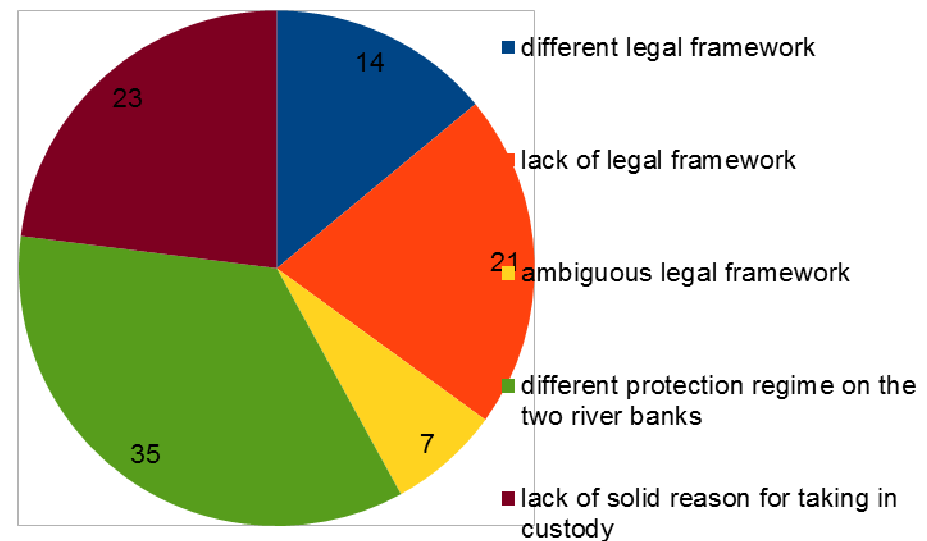
3.1 Ce aspecte considerati a fi problematice in abordarea unui management integrat al coridorului raului Prut (cum ar fi amenajarea teritoriului, managementul apelor,

Approach. Actions. **Achievements**

- ❑ Analyze opinions about the legal aspects affecting an integrated policy along Prut Corridor.

The most important drawbacks are provided by :

- different protection regimes on the two banks of the river,
- different legal frameworks
- lack of legal framework where it is the case



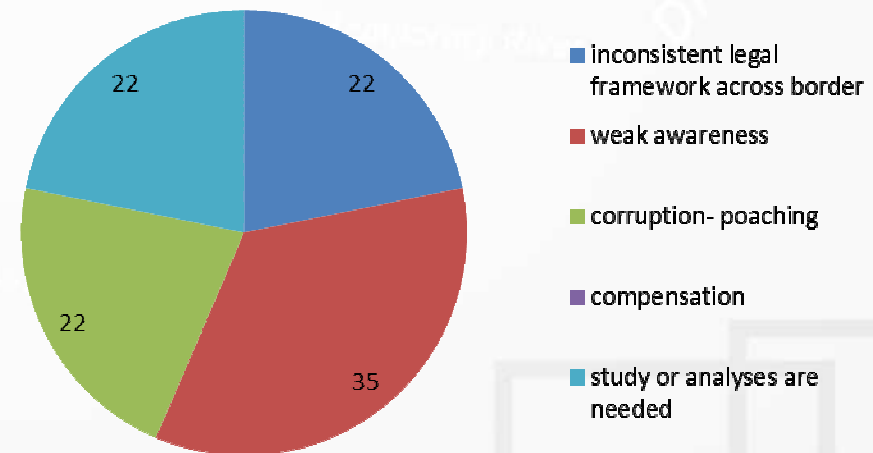
Approach. Actions. **Achievements**

- ❑ identify the key issue faced by any authority that would implement an integrated management along the Prut corridor

The main issues are:

- weak awareness;
- inconsistent legal framework along the state border;
- Studies, specifically projects needed

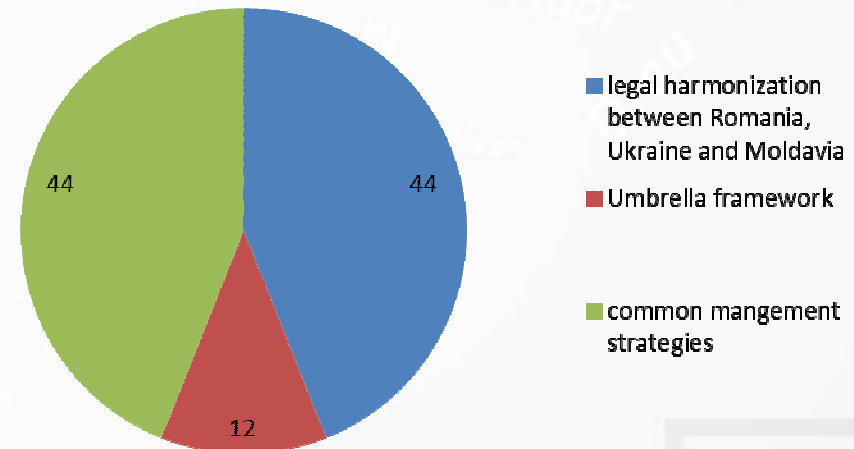
Compensatory payments are not considered so important for biodiversity conservation in areas where the conservation regime is partially implemented.



Approach. Actions. **Achievements**

- ❑ Analyze the most important challenges needed to overcome for a better integration of sustainable and integrated management along the river.

- legislative integration
- common management strategies are needed first, while umbrella projects are welcome for a better understanding of these challenges

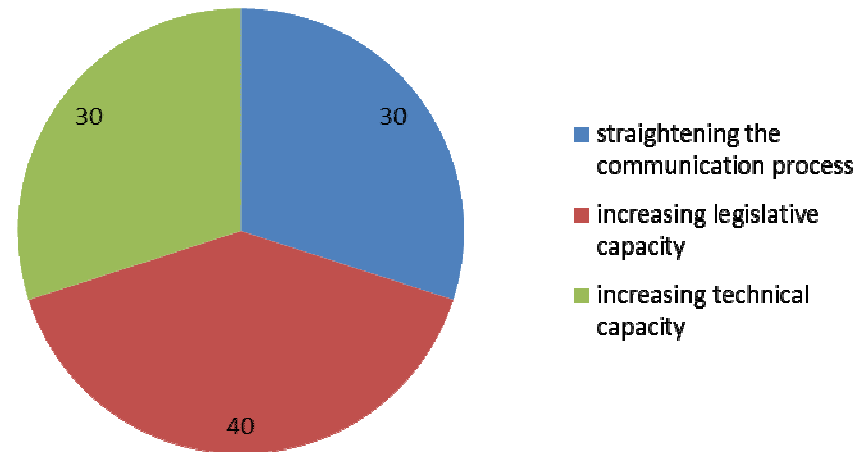


Approach. Actions. **Achievements**

- ❑ Analyze the need to improve integrated management along the river:

The results are:

- increasing legislative capacity
- straightening the communication process
- increasing technical capacity



As a conclusion, the most important key elements raised for an integrated management along Prut corridor are related to: common management strategies, umbrella framework which has to integrate all aspects concerning the river management, land use, spatial planning and biodiversity, and legislative harmonization.

Objectives and visions related to Prut River corridor

□ During all national and international workshops.....

- Thinking on a realistically vision...
- Debates, discussions...
- Learn from other countries experience...
- Putting on a paper

The most significant, important points of the vision are as follows:

- Reaching good water quality for Prut River
- Ensuring the water supply for all water users from both sides , including the ecological flow downstream of Stanca Costesti River Dam,
- Ensuring, maintaining and extending an integrated management of wetlands from Lower Prut
- Ensuring an integrated river basin management by taken into account all economic and social activity
- Cooperation for flood risk management in a suitable way and ensuring that no unilateral flood protection works which can produce damages on the other side will be executed

Future main steps

- ❑ Report regarding the activity, conclusions and common agreements in the frame SEE River project – to be presented to bilateral commissions;
- ❑ Exchange experience. Establishing common working groups on different thematic areas
 - water quality assessment;
 - water and biodiversity legislation,
 - technical aspects (gravel extraction)
- ❑ Proposal for continuity

Thank you for your attention