

Evaluating the Catchment Based Approach in England

Transferable Lessons for National Implementation

Clare Black

Cascade Consulting

YJRees
Consulting

eftec

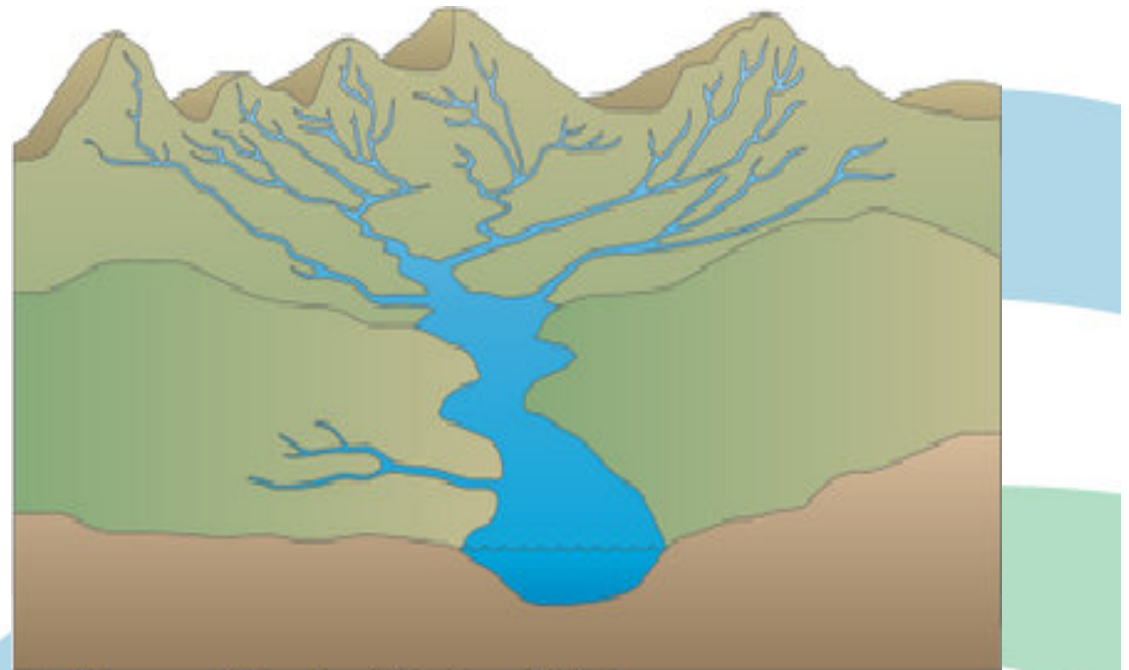


Collingwood
Environmental
Planning

What is the Catchment Based Approach?



- Catchment management in the UK
- Water Framework Directive
- Collaboration for river restoration

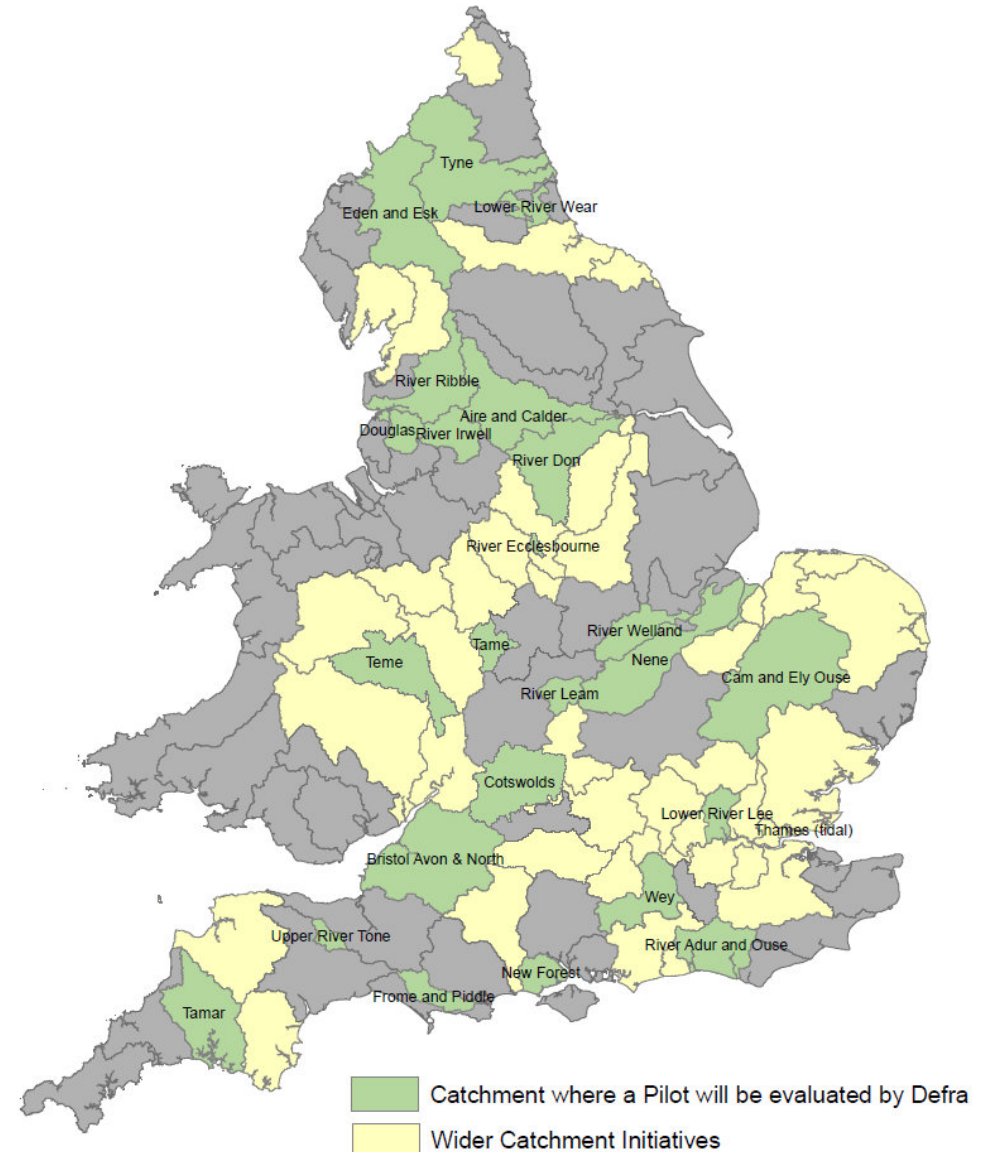


<http://ian.umces.edu/imagelibrary/displayimage-6434.html>

Pilot phase

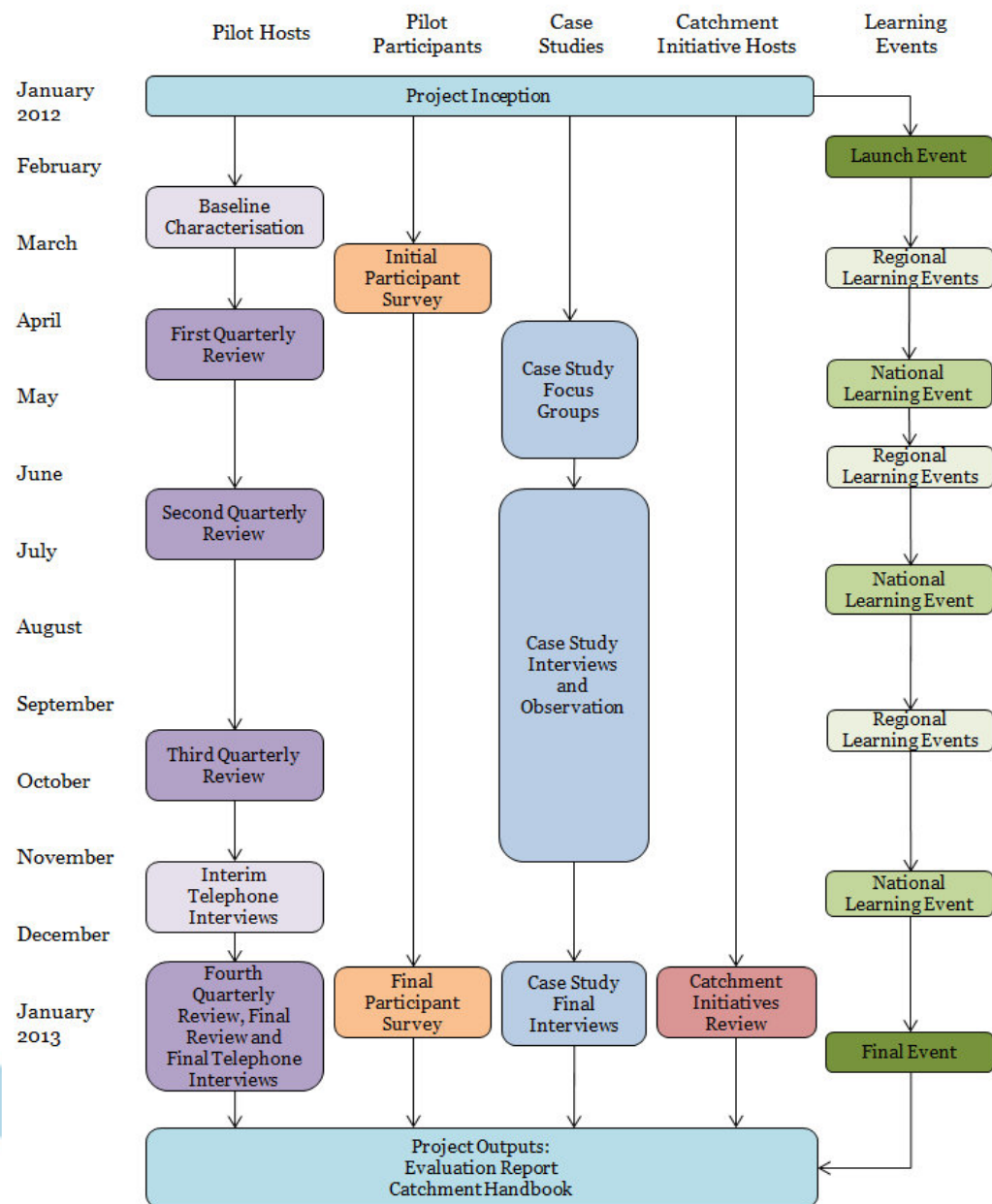


- 25 catchment pilots
- Plus ~40 catchment initiatives
- Range of characteristics



Department
for Environment
Food & Rural Affairs

Evaluation activities



Second Quarterly Review (Apr-Jun)

CASCADE Collingwood Environmental Planning Y JRees Consulting defra

Page 12 Feedback on the form Page 12 of 12

78. How long did this form take to complete?

☐ Less than 1 hour
☐ 1-2 hours
☐ 2-3 hours
☐ More than 3 hours

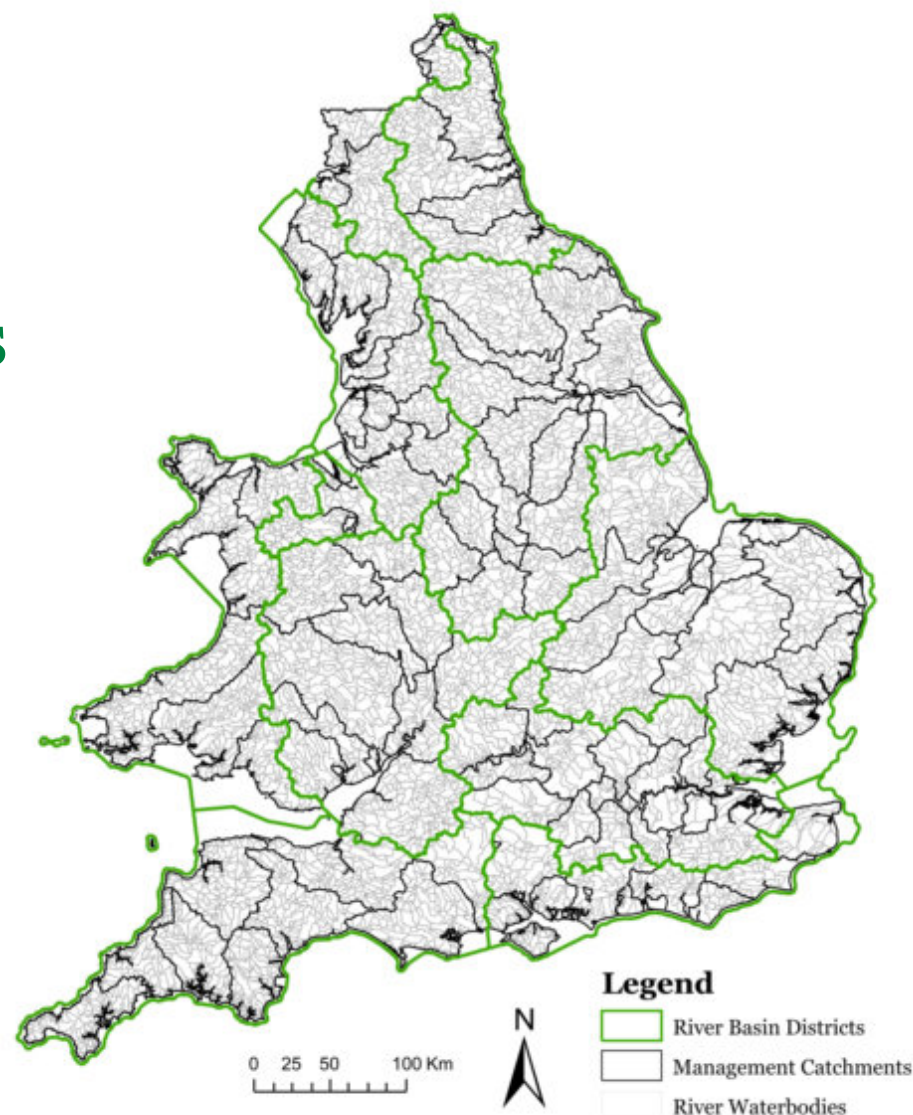
78. How long did this form take to complete?

	Responses	Percent
Less than 1 hour:	1	4.55%
1-2 hours:	8	36.36%
2-3 hours:	10	45.45%
More than 3 hours:	3	13.64%
Total Responded to this question:	22	95.65%
Total who skipped this question:	1	4.35%
Total:	23	100%



Key findings

1. Working at the catchment scale
2. Engaging local stakeholders



Key findings



3. Identifying solutions

Ribble Life

Home Catchment map About Us Issues Get Involved Action Plan More about the Catchment

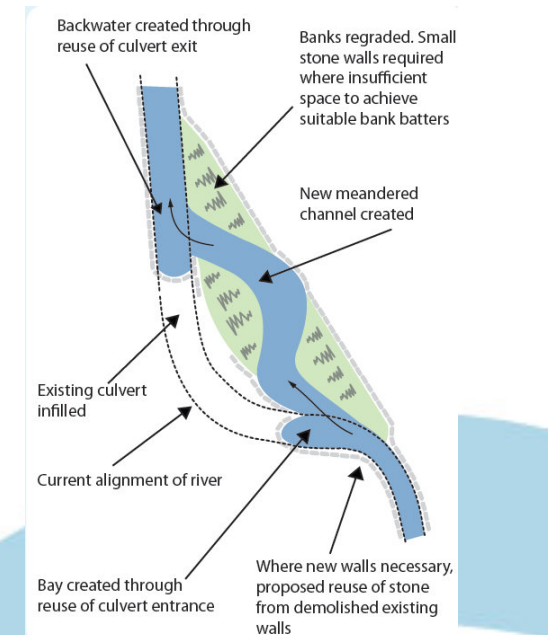
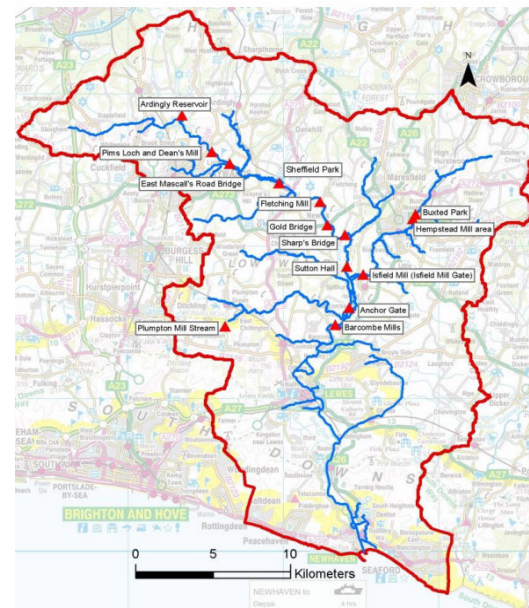
Home

Action Plan

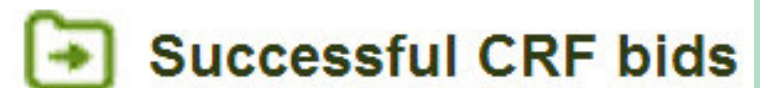
Status: Partners: Catchment: Theme:

Only my flagged actions:

Catchment	Objectives	Actions	Targets	Timescale	Theme	Sub Theme	Status	Partners	Comments	Flags
Ribble Catchment	01 Control invasive non native plant species such as giant hogweed, Japanese Knotweed, Himalayan balsam	001 Survey and encourage control and removal of invasive non-native plant species across the Ribble catchment.	1. Identify upstream extent of invasive species on all watercourses within the Ribble catchment by 2012. 2. Begin programme of control with local volunteers and community groups by Jun 2012.	By 2012	Habitat	Non-native Quality Invasive species	Completed	Environment Agency, Landowners, Local action groups, Ribble Rivers Trust (RRT), Wildlife Trust		<input type="button" value="View"/>
Ribble Catchment	3	002 Determine priority areas for grip blocking in upland (headwater) areas across the Ribble catchment and deliver schemes.	Priority areas for grip blocking determined	End of 2013	Habitat	Quality	In progress	Landowners, Wildlife Trust, Yorkshire Dales National Park (YDNP)		<input type="button" value="View"/>



4. Value for money



Outputs



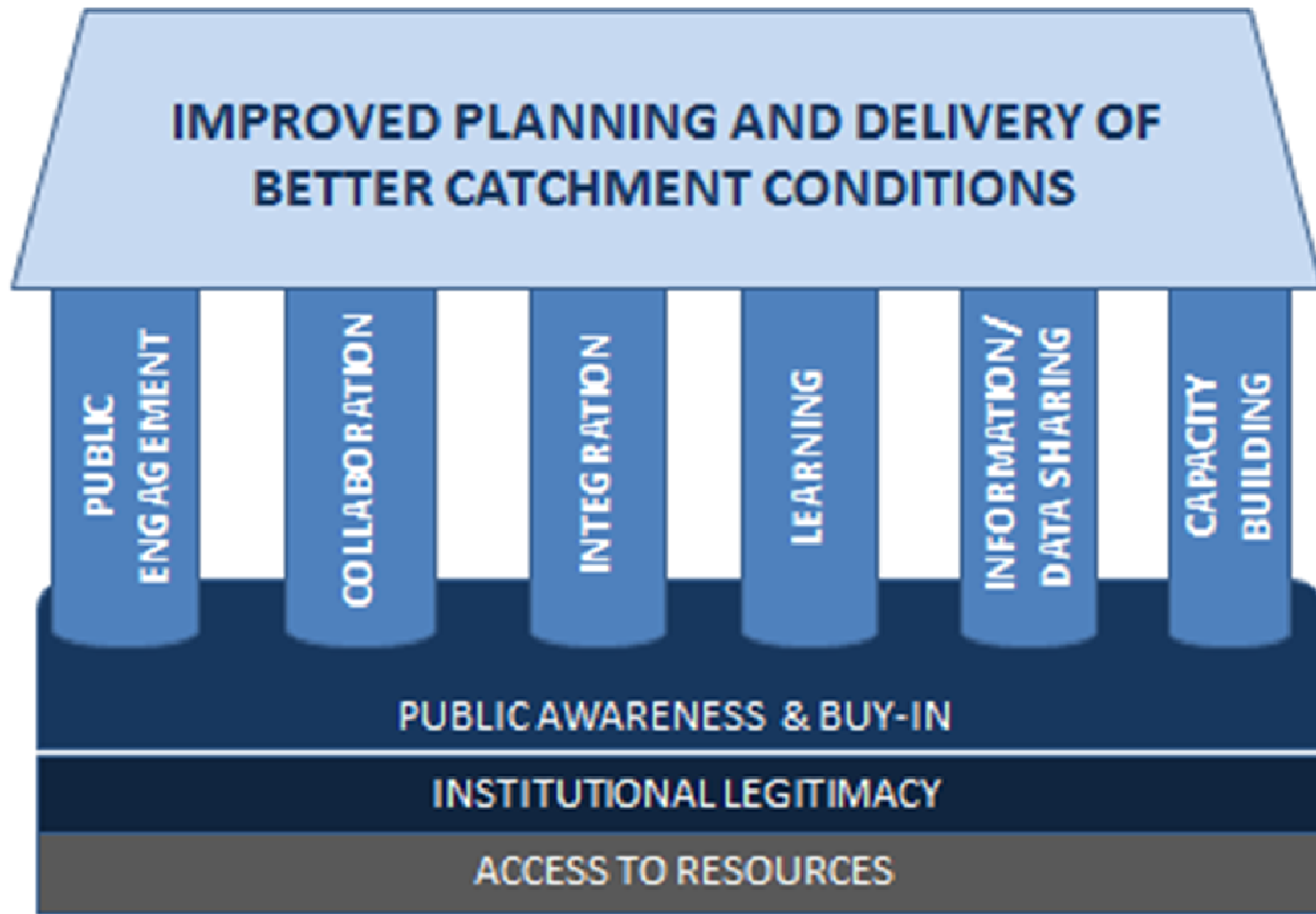
Defra

Evaluation
Pilot Stage

Final Evalua

May 2013

In Association with



gov.uk/defra

g the

option of
nproving

Outcomes



Find out more...



The Catchment Change Management Hub

<http://ccmhub.net/>

Find, share and comment on:

- Catchment work in your area
- Useful tools and resources
- Blogs and case studies
- Key ideas, terms and policies

Please take a look and tell us what you think!

Twitter: @CatchmentHub

Email:

catchmentpilots@cascadeconsulting.co.uk



LANCASTER
UNIVERSITY



A screenshot of the Catchment Change Management Hub website. The page has a white background with a blue header. The header includes the site name "Catchment Change Management Hub" and a search bar. Below the header is a navigation menu with links: Home, My Catchment, Catchment Management, Tools and Resources, and Case Studies. The main content area features a large image of a river and a welcome message. The welcome message includes a 5-star rating and a description of the hub's purpose. Below the welcome message is a section for "What's new?" with a list of links. On the left side, there is a "Tweets" section showing recent tweets from @CatchmentHub. The bottom of the page features a footer with logos for various partner organizations.