



Dienst Landelijk Gebied
Ministerie van Economische Zaken

Sketch & Match

engaging stakeholders in design



Cat's Bend Romania

13 September 2013



Contents

- 1 introduction to Sketch & Match
- 2 Sketch & Match in Romania: project and lessons learned
- 3 recommendations: how to ensure local sustainability

PART 1

Introduction to Sketch & Match





What is Sketch & Match? - the method

- 1 to 3 day intensive and interactive workshop method ('pressure cooker')
- on site NOT in the office (!)
- 3 to 4 teams of up to 7 stakeholders from very different backgrounds: land owners, inhabitants, experts, local / regional / national authorities, ngo's, etc
- 1 process supervisor (overall), teams facilitated by landscape architects
- the teams:
 - analyse the spatial problem(s) of the area
 - (re) define the assignment
 - elaborate and **draw** integrated solutions (group theme or focus)
- input: maps (GIS), presentations, **collective knowledge and creativity**



Advantages of Sketch & Match

- collective thinking and sketching:
 - ➔ integrated, locally adapted and **tailor-made** solutions ('added value')
 - ➔ raises awareness and leads to empowerment
 - ➔ making plans 'with' people rather than 'for' people
- **dialogue** instead of discussion:
images unite, words are easily misinterpreted
 - ➔ true understanding of each other other's interests
- conceptual **flexibility**
- increases **support** for a spatial plan/policy & accelerates decision making
- last but not least: enthusiasm, energy, **fun**

PART 2

Sketch & Match in Romania





Project history

2006 / 2007

1. REELD study by Apele Romana: strategies for flood protection Danube Delta region
2. first contact between DLG and Romanian authorities, institutes and ngo's
 - ➔ Cat's Bend as project area
 - ➔ REELD study as starting point for Dutch "Room for the River" approach
 - ➔ developing flood protection scenario's, together with stakeholders
 - ➔ funding by Dutch 'Partners for Water' program

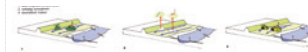
Room for the River - design principles



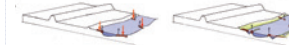
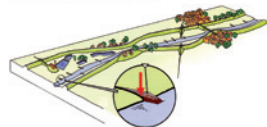
Deepening of the forelands



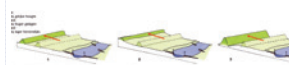
Removal of obstacles



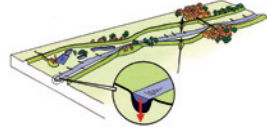
Lowering of groynes



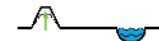
Displacement of dikes or
Depoldering



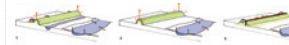
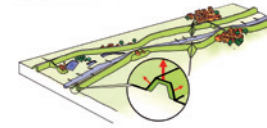
Enlarging of summer beds



Flood channel



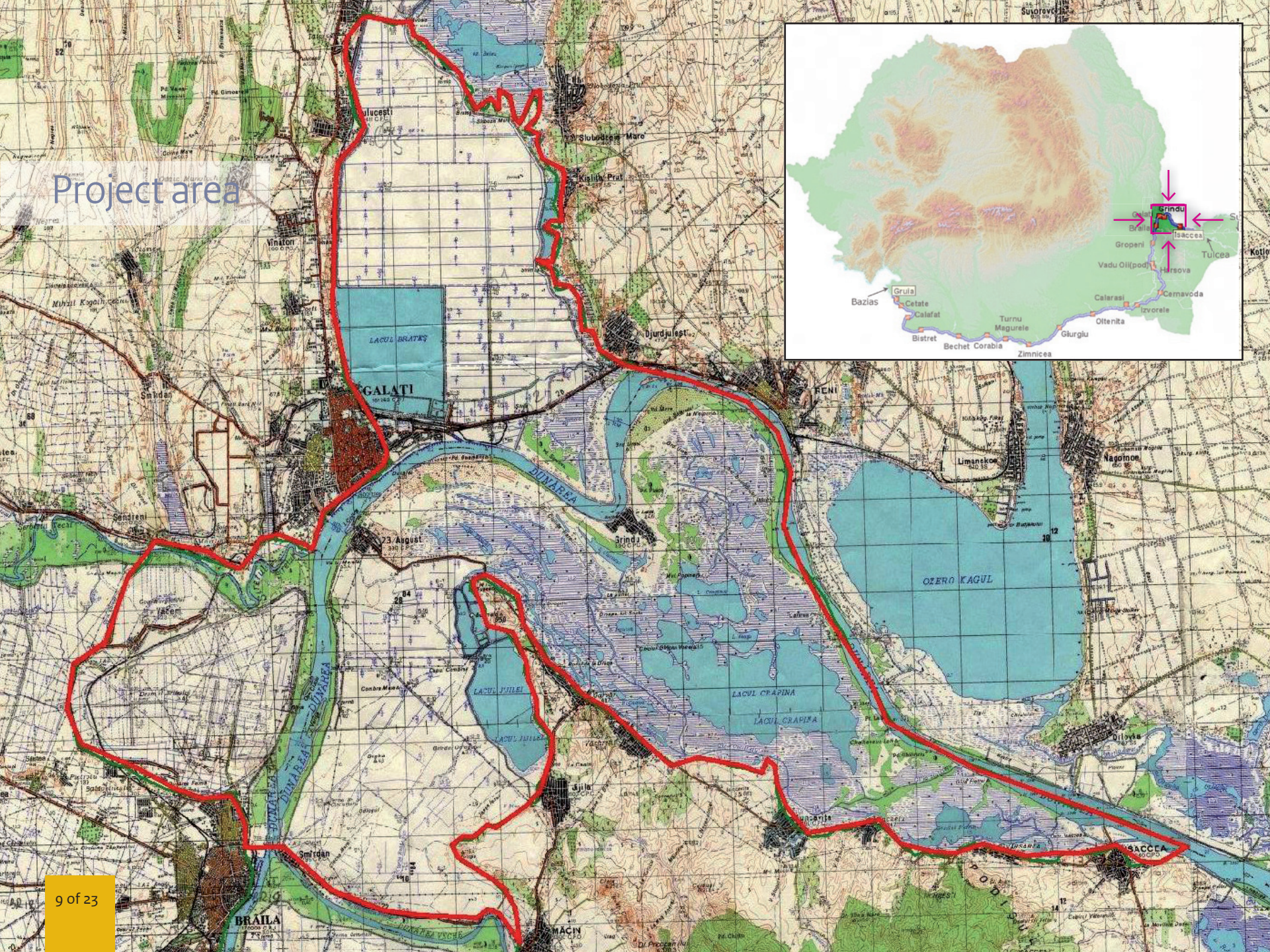
Strengthening of dikes



retention
watercompartment



Topographic map of the Braila area in Romania. The map shows the Danube river flowing through the region, with several lakes (Lacul Brates, Lacul Jiliei, Lacul Crapina, Lacul Jiliei, Lacul Jiliei) and surrounding towns (Braila, Galati, Iasi, Slatina, etc.). A red line outlines the 'Project area'. An inset map shows the location of the project area within the larger context of Romania and the Danube river.



An aerial photograph showing a vast landscape of agricultural fields, likely rice paddies, arranged in a grid-like pattern. A river or canal winds through the upper right portion of the image. The fields exhibit various shades of green and brown, indicating different stages of cultivation or land use. A small cluster of buildings or a village is visible near the river in the upper right. The overall scene depicts a typical rural agricultural region.

aerial photograph

Grindu

wetlands



Macin mountains





agriculture

more agriculture...



Danube at Grindu





Initial objectives of Sketch & Match in Cat's Bend

- introduce participants to this method of interactive design
- explore suitable flood protection scenarios:
 - supported by local, regional and national stakeholders
 - suited for the land use and characteristics of the local landscape
 - preferably in accordance with existing policies
- **focus shift** during Sketch & Match Cat's Bend:
stakeholders perceived drought / water scarcity - *leading to socio-economic problems* -
as equally urgent problems

redefined design assignment:

➔ water management AND sustainable economic development



Program of Sketch & Match Cat's Bend

DAY 1

- exploration of design assignment and project area:
- field excursion, analysis by maps
- **problems, qualities and opportunities (potential)**

DAY 2

- exploration of **solutions**
- calculate probable **effects** with hydraulic modelling

DAY 3

- **synthesis**: integration of concepts into integrated sketch
- final **presentation** for team members and decision makers



Lessons learned: succes (and fail...) factors

- thorough preparation
 - problem (pre)definition
 - selection of participants
 - program
 - facilities and materials (location, catering, tracing paper, etc)
 - input (maps, presentations, field excursion, etc)
- enthusiastic and motivated participants (at least some...)
- well qualified, cooperative team
- combination of sketching and hydraulic modelling
- flexibility (concepts and process)

PART 3

Recommendations





Recommendations: how to ensure local sustainability

1. think **top-down, act bottom**-up in a cyclic way:

- use the Sketch & Match or similar method in policy planning and equip staff
- coherent set of objectives at national level, pliable on local level (finetuning)



2. **triple layer approach**: prevention | sustainable planning | disaster management

3. combine **vision with facts** (eg. hydraulic modelling or other calculations)

4. include **socio-economic aspects** in a broad approach for solutions ('added value')

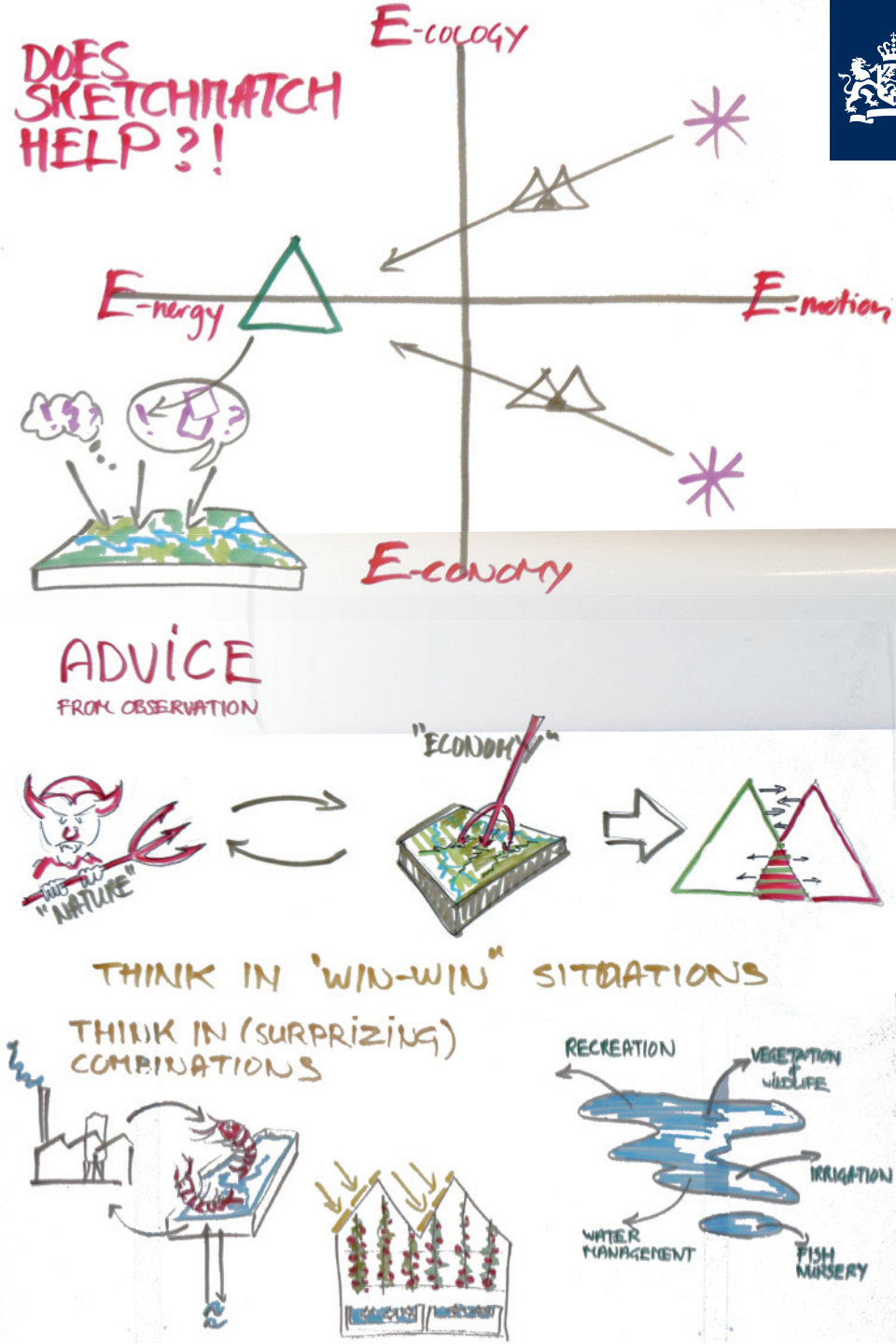
5. focus on **common ground** (win-win) instead of (apparent) contradictions

6. think about an effective **follow up** before starting a Sketch & Match session!



The End

Thank you for listening!
Any questions?



Sketch & Match[©]

Widen your view

DLG Government Service for Land and Water Management works today to shape the landscape of tomorrow